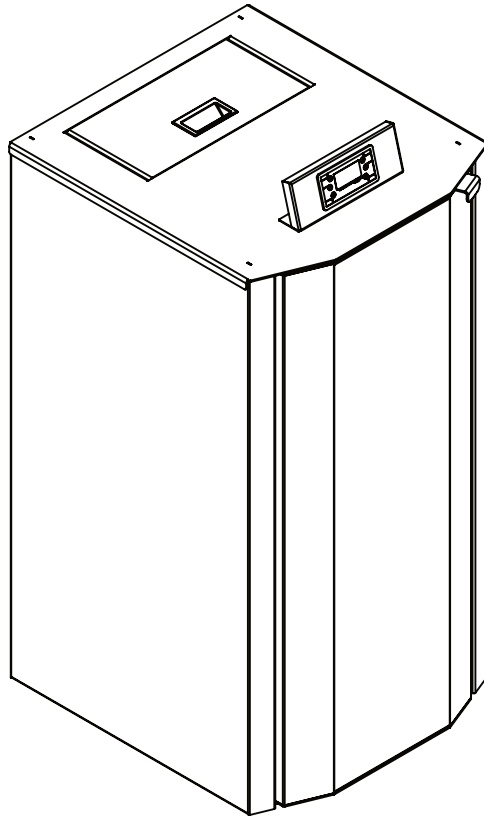




**Mareli Systems**  
STEP FORWARD



Pellet stove  
**MB Compact 12/15/18/24/30**  
User manual

rev. 1.2

## Content

1. Introduction.....	3
2. Warnings and safety instructions.....	3
3. Type of fuel .....	5
4. Technical data.....	6
5. Installation .....	9
5.1 Placing.....	9
5.2 Connecting with the hydro system .....	11
5.3 Connecting to chimney .....	14
5.4 Air inlet.....	17
6. Operating with the display .....	18
6.1 Home screen .....	18
6.2 Menus and submenus .....	19
7. Cleaning .....	23
8. Error codes and messages .....	29
9. Spare parts.....	33
10. Control board wiring diagram .....	39
11. Storage and disposal .....	40
11.1 Disposal of package .....	40
11.2 Not used for idle periods.....	40
11.3 Disposal of the appliance.....	40

## **1. Introduction**

Dear Customer,

Our products are designed and manufactured in accordance with standards in force, with high quality materials and using our extensive experience in the transformation processes.

To get the best performance, we suggest you read the instructions in this manual carefully. It is an integral part of the product so ensure that the manual is always supplied with the appliance, even if it changes owner.

If the manual is lost you can download it directly from the company's website.

## **2. Warnings and safety instructions**

The pellet heating system may only be installed and started up for the first time by an authorised technician. Professional installation and start up is the prerequisite for safe and economical operation.

- Never make any changes to the heating system or flue gas system;
- Never close or remove safety valves;
- This appliance is not intended for use by people (including children) with limited physical, sensory or mental abilities or lack of experience and knowledge.
- The place and way of connecting the stove should be selected carefully in accord with the safety instructions. Install away from flammable objects!
- Before starting any operation, the user must read and fully understand the contents of this instruction manual. Incorrect setup may cause hazardous conditions and/or incorrect function of the stove;
- Do not wash the stove with water. Water can get inside the fireplace and damage the electronics and cause an electric shock;
- Do not put clothes to dry on the stove. Any clothes hangers and other objects must be located within a reasonable distance from the fireplace. Fire hazard;
- The user is fully responsible for the proper use of the product which exempts the company from liability of any users errors or misbehaviour or omissions;
- Any intervention or replacement that is made by unauthorised people or using non original spare parts for the product can be risky for the user and release the company from all liability;
- Most surfaces of the stove are extremely hot (the door handle, glass, flue pipe, etc.). Avoid contact with these parts before assuring yourself that you use temperature resistant gloves as well as suitable temperature resistant instruments;

- The product must be electrically connected to a system equipped with an effective earth conductor. (Must be grounded);
- Turn off the stove in case of failure or malfunction;
- It is strictly forbidden to use alcohol, petrol, liquid fuel for lanterns, diesel, bio-ethanol, charcoal or any other similar liquids to light up the flame in the device. Keep such liquids away;
- Do not put any fuel other than wood pellets in the hopper;
- Periodically check and clean the smoke outlet ducts of the stove (connection to the flue pipe);
- Pellet stove is not a cooker;
- Under no circumstances should the fire be ignited with the door open or broken glass;
- Do not light the stove with flammable materials if the ignition system failed;
- All unburnt pellets in the burner after each unsuccessful ignition attempt must be removed before a new ignition;
- When installing the product all fire safety requirements must be respected;
- If there is a fire in the flue pipe, extinguish the stove, disconnect the power cord and never open the door. Call competent authorised service technicians;
- The product maintenance operations must be exclusively carried out by a qualified operator on a yearly basis;
- A non-compliant or improper maintenance of the product can cause hazardous situations and/or irregular operation;
- Always keep the cover closed;



**Seeing this sign means you must strictly follow the instructions for your own safety!**

### 3. Type of fuel

The pellet is obtained from natural dried wood sawdust (without paint). The compactness of the material is guaranteed by the lining contained in the wood itself, without glue or binders.

The market offers different type of pellets with characteristics that vary according to the wood mixture. The most common diameter on the market is 6 and 8mm, with a length between 3 and 40mm. A good quality pellet has a density of between 600 and 750kg/cubic meter (or even more). The moisture content must account for 5 to 8% of its weight.

Pellets have technical advantages besides being an ecological fuel, as the wood residue is used completely, thereby achieving cleaner combustion than the fossil fuels.

While good-quality wood has calorific value of 4.4 kW/kg (15% moisture after 18 months of seasoning), that of the pellets is around 4.9 kW/kg. To ensure good combustion, the pellets must be stored in a dry place protected from dirt. Good quality pellets guarantee good combustion, thereby decreasing harmful emissions into the atmosphere.

The main quality certifications for pellets currently available on the European market guarantee that the fuel complies with class A1/A2 according to ISO17225-2. These certifications include, for example, EN Plus, DIN plus, Ö-Norm M7135, and specifically assure that the following characteristics are complied with:

- Calorific value: 4.6 - 5.3 kWh/kg.
- Water content:  $\leq 10\%$  of the weight.
- Percentage of ash: max 1.2% of the weight (A1 less than 0.7%).
- Diameter:  $6\pm 1/8\pm 1$  mm.v
- Length: 3-40 mm.
- Content: 100% untreated wood without the addition of binding agents.

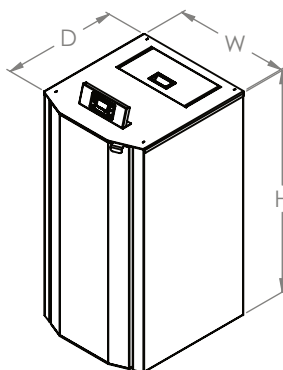


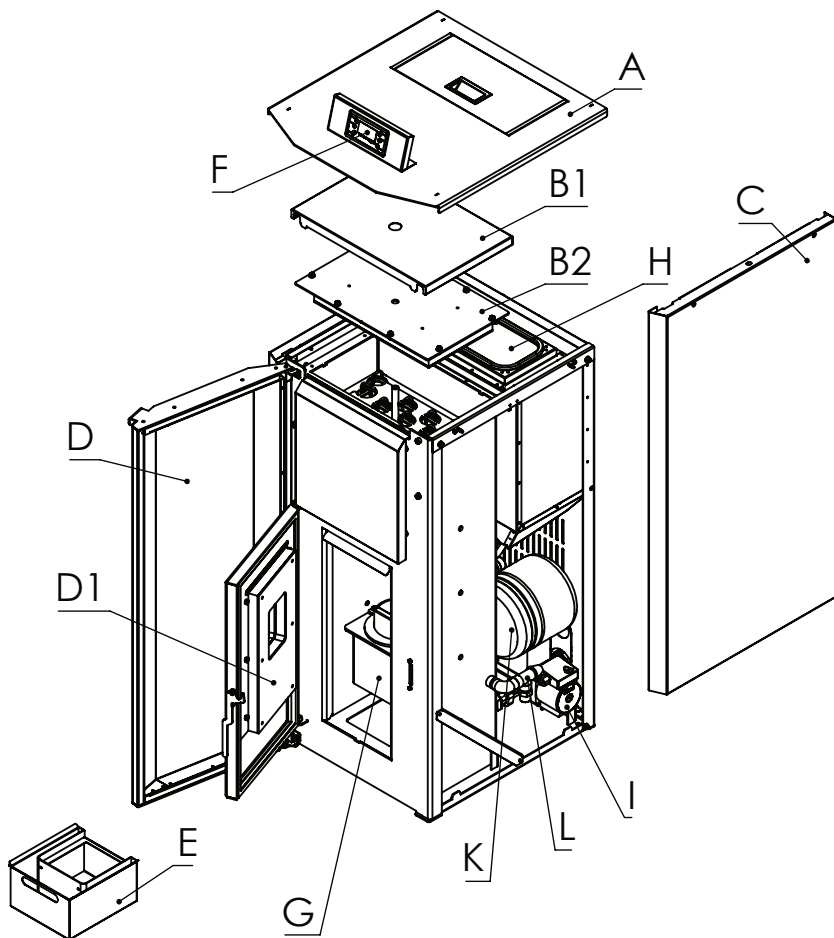
**The use of pellets that do not comply with the above characteristic may compromise the operation of your product!**

## 4. Technical data

Maximum output	kW	12	15	18	24	30
Heating area*	m³	340	430	510	680	860
Height H	mm	1047	1047	1127	1127	1177
Width W	mm	534	534	584	584	624
Depth D	mm	650	650	650	650	690
Pellet bunker volume	kg	30	30	39	39	45
Fresh air pipe	Φ mm	60				76
Exhaust gas pipe	Φ mm	80				
Weight	kg	177		190		209
Fuel type	-	Pellets Ø6-Ø8 mm				
Chimney draft	Pa	12				
Electrical consumption	W	60/310				
Electrical supply	V/Hz	230/50				
Water jacket capacity	L	30		41		48
Working pressure	bar	0,5-2,0				
Space heating output	kW	1	1	2	3	4
Working at enviroment temperature	°C	5-40				
Humidity at 30°C enviroment temperature	%	85				
Energy conversion efficiency	%	>93	>93	>94	>94	>93
CO emissions	Mg/m3	<300				
Temperature of the flue gas	°C	91		129	131	135
Maximum water temperature	°C	90				

\*if the heating needs are the average 0,035 kW/m<sup>3</sup>

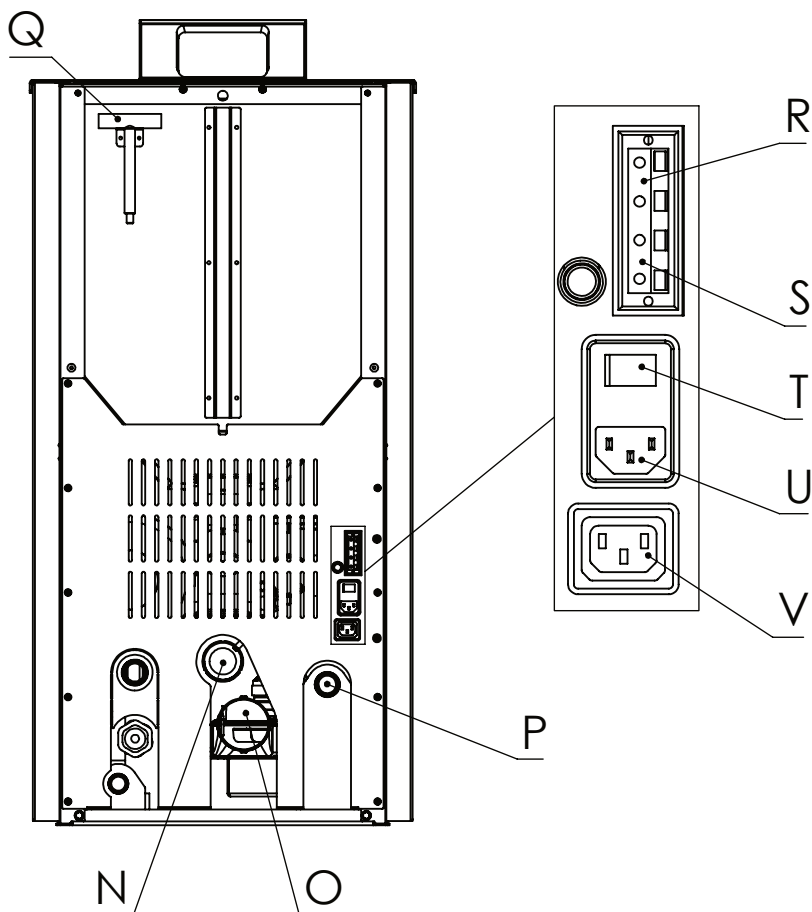




A - top cover  
B, B1 - turbolators cover  
C - side metal panel  
D - front metal door  
D1 - inner front door  
E - ash tray  
F - control display

G - combustion chamber  
H - pellet bunker  
I - inlet circulation pump\*  
K - expansion vessel\*\*  
L - safety valve\*  
M - turbolators with manual cleaning system

This is a depiction of the different component placements. Some components like the pumps / expansion vessels could be optional extras and might not be included in the products in some regions / countries.



- N - air inlet
- O - exhaust gas fan
- P - water outlet
- Q - handle for manually cleaning the turbolators
- R - room thermostat
- S - DHW temperature probe
- T - power switch
- U - power supply inlet
- V - pump power supply



## 5. Installation

### 5.1 Placing

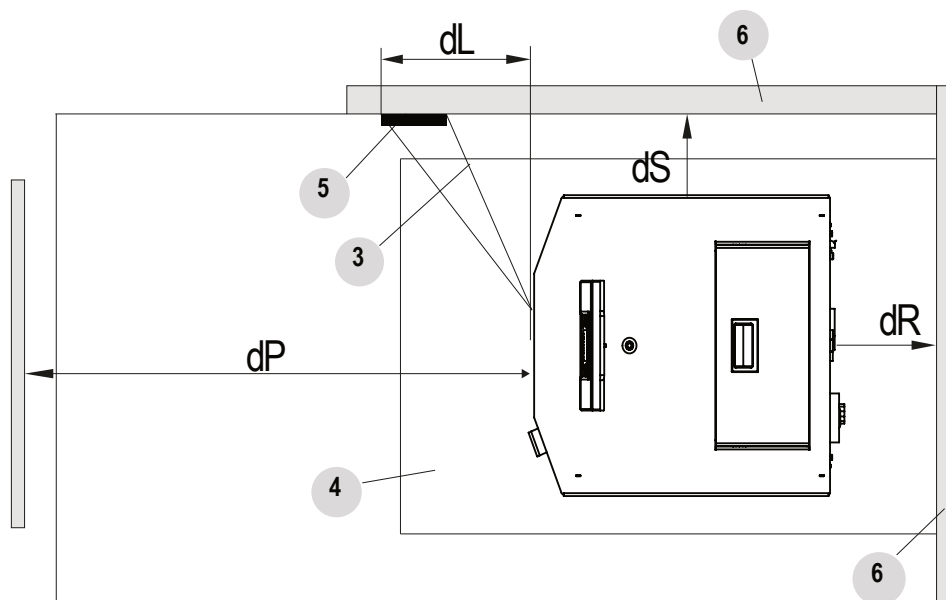
All national, regional and European requirements for safe operation of the appliance must be respected during installation and operation.

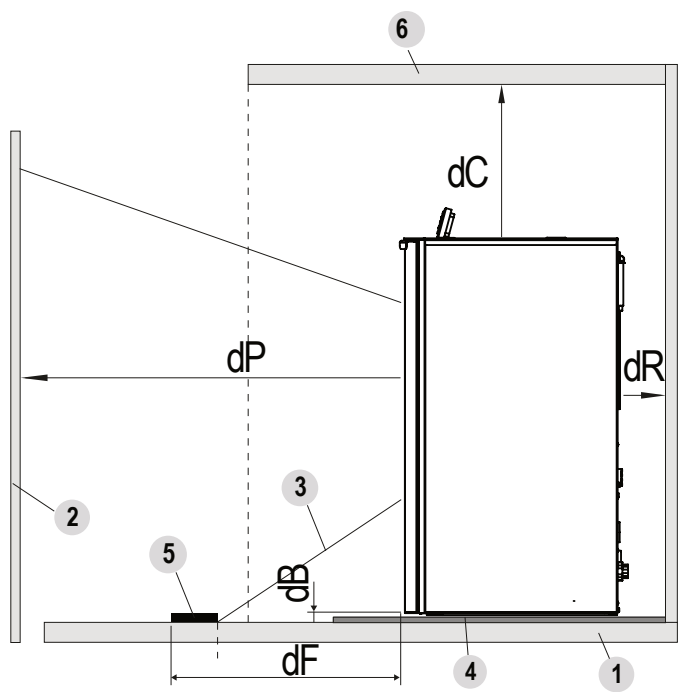
Prior to installation, load capacity of the place where the stove will be intended must be ensured. The weight of the stove is specified in the technical data table.

To ensure the correct and safe operation of the stove, the following conditions must be met:

- The installation of the stove and its accessories must be carried out by authorised technician.
- The floor where the stove is installed should be flat and horizontal, made of fire-resistant materials.
- Minimum distances from the wall to the stove should be at least 400 mm. The minimum space in front of the fireplace should be 1500 mm. The minimal distance of the stove from combustion materials should be no less than 1500 mm.

Observe the distances from flammable objects (sofas, furniture, wood panelling, etc..) as specified in the following diagrams:

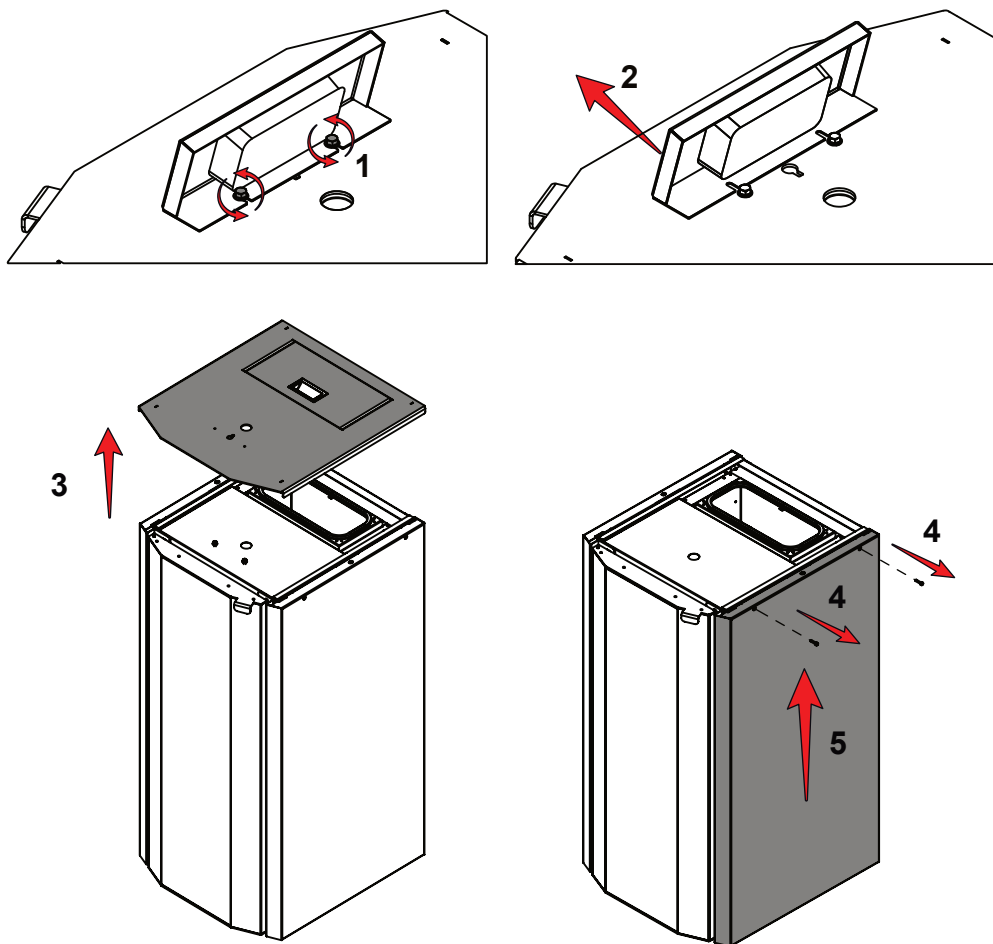




1	Floor	4	Floor guard
2	Front flammable material	5	Radiated surface to be protected
3	Area subject to radiation	6	Rear/side/upper flammable surface

	Minimum safety distance (mm)
dR (rear distance)	600
dS (side distance)	400
dB (lower distance)	0
dC (upper distance)	800
dP (front distance)	1500
dF (floor radiation)	1000
dL (side radiation)	1000

## 5.2 Connecting with the hydro system



To remove the side covers:

1. Loose the display stand screws;
2. Unplug the display cable and pull forward the stand;
3. Lift the top cover;
4. Unscrew the two bolts holding the metal panel;
5. Pull to outside.

The stove with water jacket operates on water heating boiler principle.

The advantage of this type of heating system is the maximum utilisation of the heat that is produced during the combustion process. With this method the heat from the combustion chamber is evenly distributed throughout the installation.

- Ensure that every element of the installation is airtight at every single moment of its exploitation.
- All
- elements of the installation must be protected from freezing, especially if there are parts that are situated in non-heated areas.
- The circulation pump can be chosen by the capacity required by using the following formula:

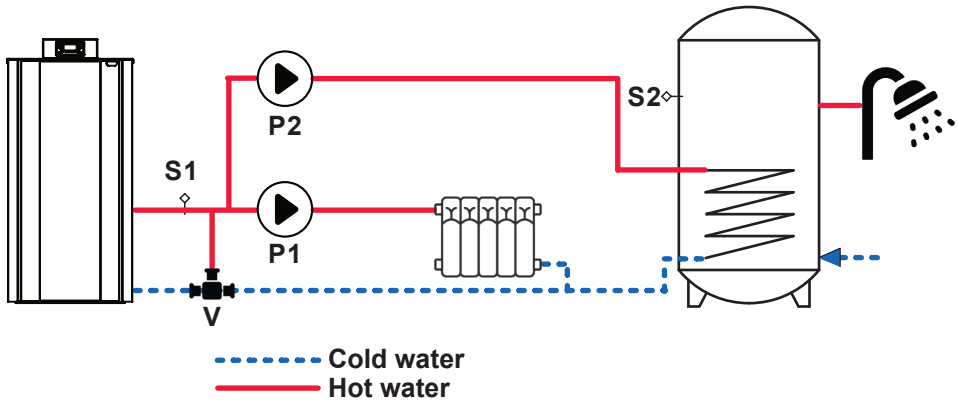
$$G=0,043 \cdot P \cdot \Delta T \quad (\text{m}^3/\text{h}) \quad (\text{accepting } \Delta T=20^\circ\text{C})$$

P (kW) is the heat output of the water jacket. The circulation pump can be turned on and off by means of a thermostat in combination with an electric switch.

- The first service cleaning of the pump's filter must be done immediately after testing the installation.
- If an old installation is going to be used it must be washed several times to ensure the removal of any accumulated dirt on the surfaces of the water jacket.
- Do not drain the circulating water of the installation during the non-heated season.
- Chemical treatment of the circulating water is not recommended.
- The filling or unloading of the system is done via a hose through a facet mounted in the lowest area.
- Mounting an expansion vessel is permitted when constructing a closed type system.
- The warranty is not valid in case of a stove with a swollen water jacket which is a result of pressure increase in the system and improper connecting.
- It is advisable to check the water quality and provide treatment if the water is very hard, have pollution or some other deviation.

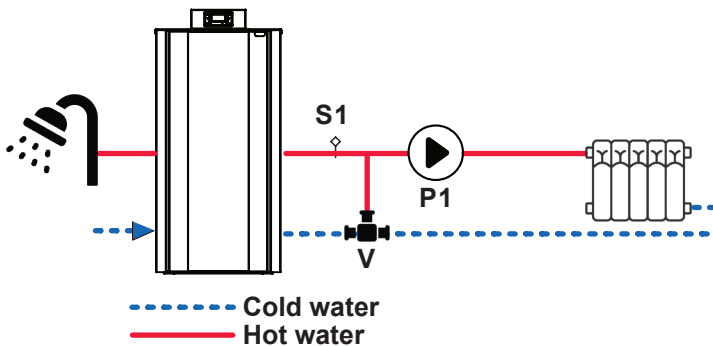


**The chemical-physical characteristics of the system and replenishing water are important for the proper operation and service life of the appliance.**



P1 - Heating system pump    S1 - Heating system temperature probe  
P2 - DHW pump                S2 - DHW buffer tank probe  
V - Anti-condensation valve  $t \geq 50^{\circ}\text{C}$

Option 2 open system with DHW:



P1 - Heating system pump    S1 - Heating system temperature probe  
V - Anti-condensation valve  $t \geq 50^{\circ}\text{C}$



The above options are just a few of all available. It is mandatory that the assembly is performed by an authorised specialist who can offer other more suitable scheme for you type of installation. Anti-condensation valve must be installed to prevent moisture and system malfunction.



Option 1. Flue installation with hole for the passage of the pipe:

- minimum 100mm around the pipe if next to non-flammable parts such as cement, brick, etc.;
- minimum 300mm around the pipe if next to flammable parts such as wood etc.

In both cases, install suitable insulation between the flue and the ceiling. Those previous rules also apply for holes made in walls.

Option 2. Built in chimney by bricks or concrete. With insulation and moisture channel. Suitable access door for chimney cleaning.

Option 3. External flue made of insulated stainless-steel pipes. i.e. with double walls. Must be securely mounted on the wall. With windproof chimney pot.

Option 4. Ducting system using T fittings that allow easy access for cleaning without having to remove the pipes.

A - insulation

B - possible diameter increase

C - inspection access panel

D - air inlet with protective grid

E - T fitting with inspection cap

F - reflux area (min 0,4m)

G - air ducting with protective grid

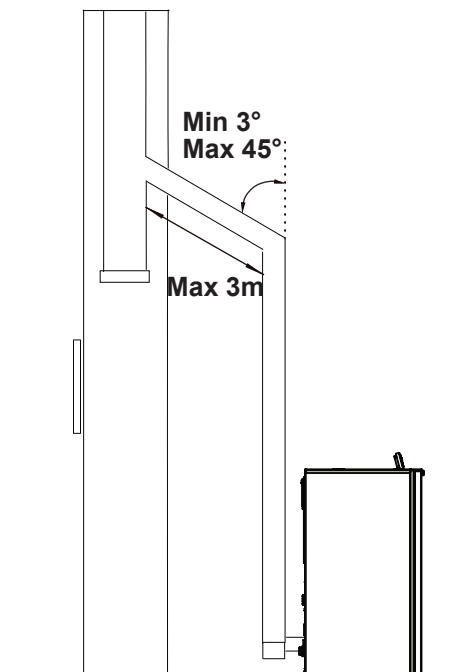
The figure shows typical, but not exhaustive, examples of all possible installations (which must always be approved by a qualified technician).

The chimney or the duct component must be airtight, waterproof and properly insulated, to be constructed with materials resistant to the normal mechanical wear, to the heat coming from the combustion products and condensation.

The recommended chimney draft at work is from 12 Pa up to 20 Pa. To ensure smooth operation of the product and no sudden changes due to strong winds the chimney must have a suitable anti-wind cover at the top.



**The chimney and the flue pipes must be cleaned and checked regularly depending on the installation and the fuel quality, but no less than once per year before the heating season.**



For the assembly of the flue pipes the use of non-flammable materials, fire and condensation resistant products is obligatory. The assembly must be performed in such a manner so it guarantees the airtight sealing and prevents condensation. If possible, avoid adding horizontal sections. Direction shift is done by using knee joints with a max angle of 45°.

For heating devices equipped with a smoke ventilator, i.e all of the “MARELI SYSTEMS” stoves, the following instructions must be observed:

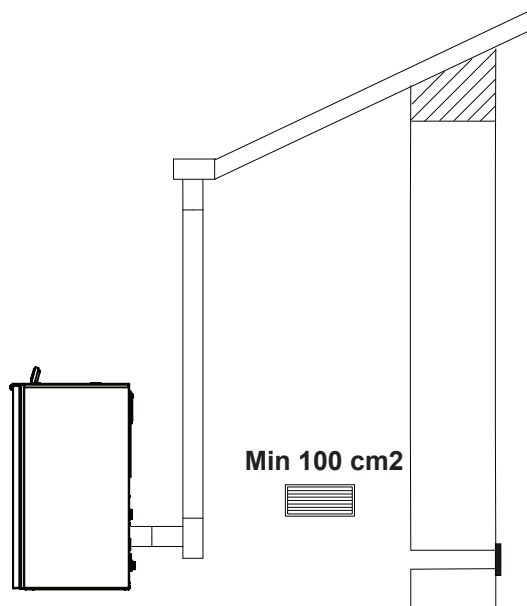
- Horizontal sections must have a minimum incline of 3° upwards;
- The length of the horizontal sections must be as short as possible, but without exceeding 3 m;
- More than four direction shifts are forbidden, including the cases where a T-shaped element is used;
- The flue components must be airtight and to be insulated if extending outside the premises in which the fireplace is installed;
- The flue components must allow a soot cleaning;
- The flue components must have a constant section. A diameter change is allowed only in the chimney joint;



**In case of a fire hazard turn off the product from the display. This will stop the oxygen flow.**



## 5.4 Air inlet



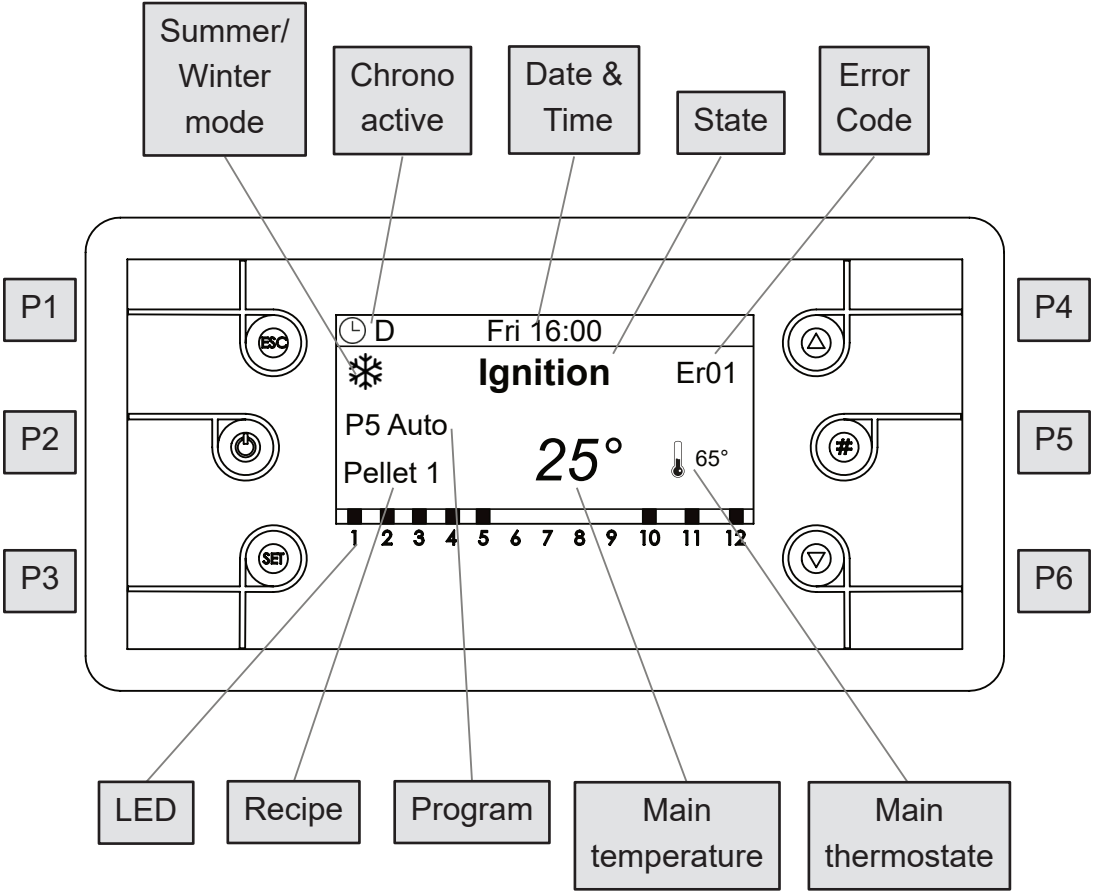
The suction pipe is placed at the rear and has a circular cross-section. The combustion air can be aspirated from the room, as long as it is close to an air intake connected to the external wall with a minimum area of 100 cm<sup>2</sup>, correctly positioned and protected by a grille.



**When the fire is ignited for a first time, a smell occurs as a result of the paint being heated. The fireplace is painted with heat-resistant paint, which achieves maximum resistance after being heated multiple times.**

6. Operating with the display

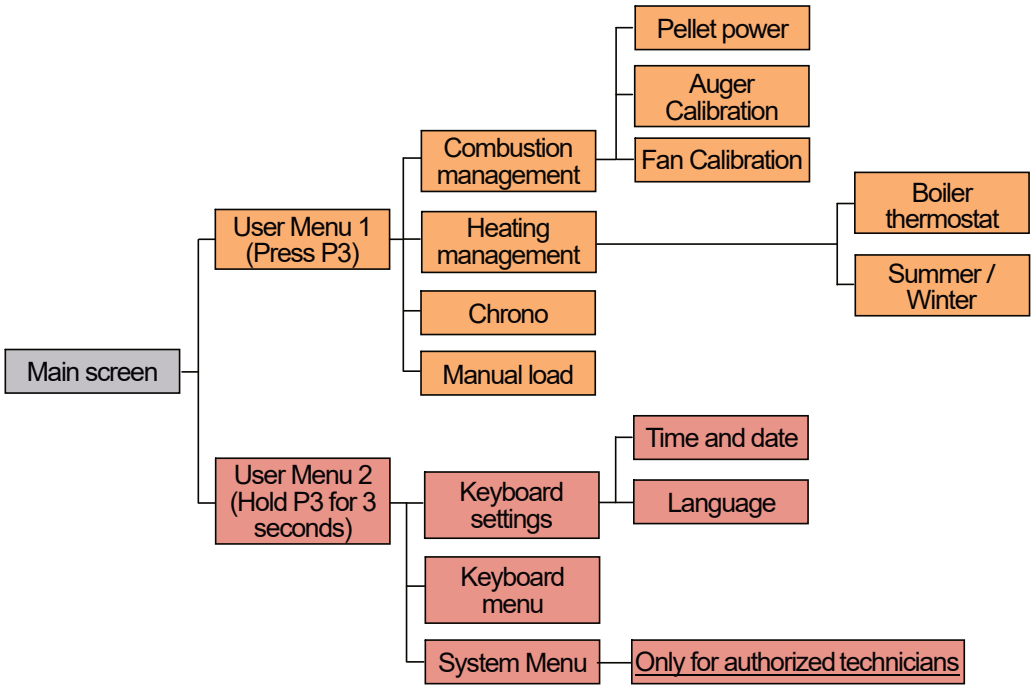
6.1 Home screen



Button	Function
P1	Exit Menu/Submenu
P2	Ignition and extinguishing (push for 3 seconds), Reset errors (push for 3 seconds), Enable/Disable Chrono
P3	Enter in User Menu 1/submenu, Enter in User Menu 2 (push for 3 seconds), Save data
P4	Enter in Visualisations Menu, Increase
P5	Activation Chrono time band
P6	Enter in Visualisations Menu, Decrease

LED	Function		
D1	Igniter ON	D9	External Chrono reached
D2	Auger ON	D10	Lack of pellet
D3	Pump 1 ON	D11	Local room thermostat reached
D4	<b>V2:</b> Pump 2 ON	D12	Sanity water demand

6.2 Menus and submenus



## User Menu 1

### Combustion Management

**Pellet Power** - In this menu is possible to modify the combustion power of the system. It can be set in automatic or manual modality . In the first case the system chooses the combustion power. In the second case the user selects the desired power.

**Auger Calibration** - Allows to modify the value for the auger feeding speed. The preset value is 0.

**Fan Calibration** - Allows to modify the value for flue gases fan speed. The preset value is 0.

### Heating Management

**Boiler thermostat** - Menu to change the value for the boiler thermostat.

**Summer-Winter** - This Menu allows you to modify the hydraulic plant functioning depending on the season.

**Manual Load** - The procedure activates the pellet manual loading with activation in continue modality of the Auger motor. The loading is stopped automatically after 600 seconds. The system must be OFF for the function can be activated.

**Chrono** - This Menu allows selecting the programming modalities and and the Ignition/Extinguishing time slots.



Disable  
Daily  
Weekly  
Weekend

**Modality** - It allows selecting the disired modality, or disable all set programming.

1. Enter modification mode through the key **P3**.
2. Select the chosen modality (Daily, Weekly or Week end).
3. Enable/disable chrono modality through the keys **P2**.
4. Save the settings through the keys **P3**.

Monday	
ON	OFF
09:30	11:15 V
00:00	00:00
00:00	00:00

## Programming

The system includes three type of programming: Daily, Weekly, Weekend.

After selecting the desired kind of programming:

1. Select the programming time through the keys **P4/P6**.
2. Enter the adjustment modality (selected time will be flashing) through the keys **P3**.
3. Change the time via keys **P4/P6**.
4. Save the programming with the keys **P3**.
5. Enable (a "V" is displayed) or disable the time slot (a "V" is not displayed") by pressing the keys **P5**.

Monday
Tuesday
Wednesday
Thursday
Friday

## Daily

Select the day of the week to program and set the ignition and extinguishing times.

### Programs around midnight

Set the clock On of the previous day at the desired time: Ex. 20.30.

Set the clock of OFF of the previous day at: 23:59.

Set the clock On of the following day at 00:00.

Set the clock of OFF of the following day at the desired time: Ex. 6:30.

The system turns on at 20.30 on Tuesday and turns off at 6.30 on Wednesday.

Mon-Fri
Sat-Sun

## Weekly

The programs are the same for all days of the week.

## Weekend

Choose between 'Monday-Friday' and 'Saturday-Sunday' and then set the switching on and off times.

## User Menu 2

### **Keyboard Settings**

**Time and date** - Menu used to set the time and date of the controller.

**Language** - Menu used to choose suitable language.

### **Keyboard Menu**

**Set Contrast** - Menu used to regulate display contrast.

**Set Min Light** - Menu used to regulate the lightning of the display when it is not used (waiting for a command).

**Keyboard Address** - This menu is protected by password and it is for technicians.

**Node List** - This menu shows the communication address of the board, typology of the board, firmware version and code.

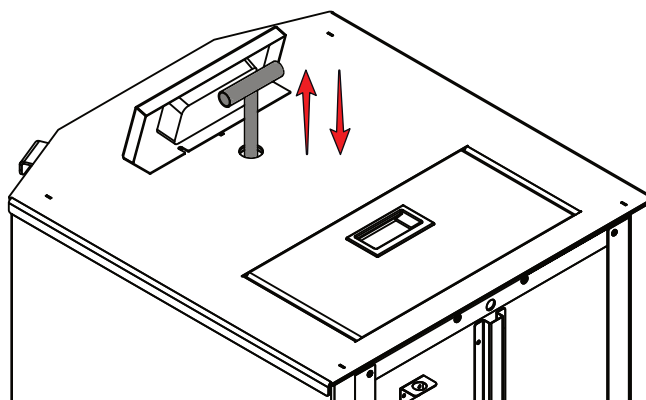
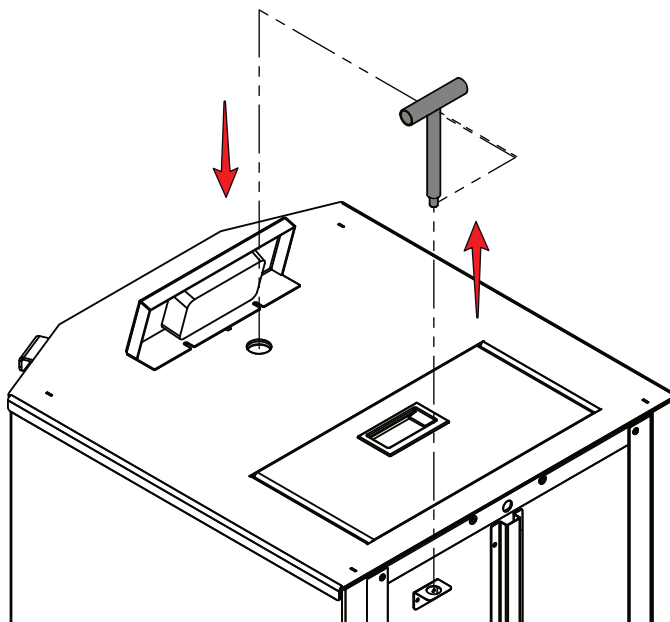
**Acoustic Alarm** - It allows to enable or disable the acoustic alarm of the keyboard

## 7. Cleaning



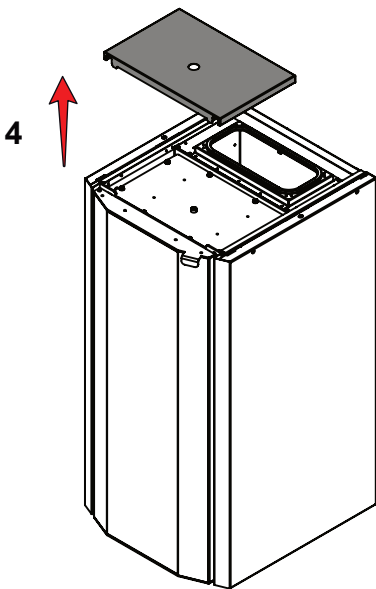
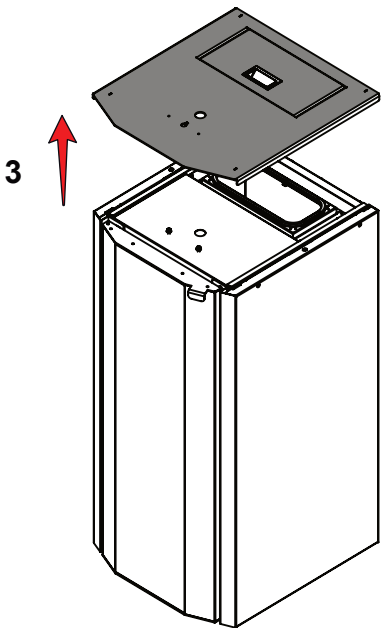
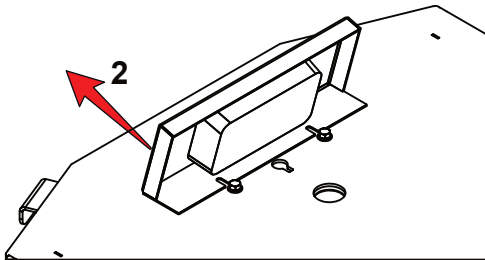
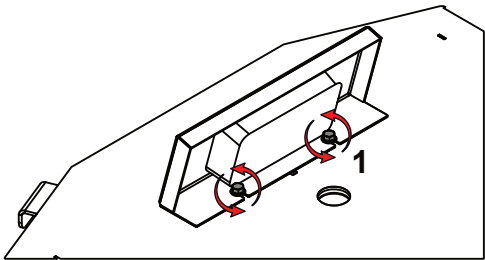
**Before any type of cleaning of the stove be sure that the product is switched off and cooled down!**

Step 1



Use the provided handle to screw it on and manually clean the turbolators by moving up and down.

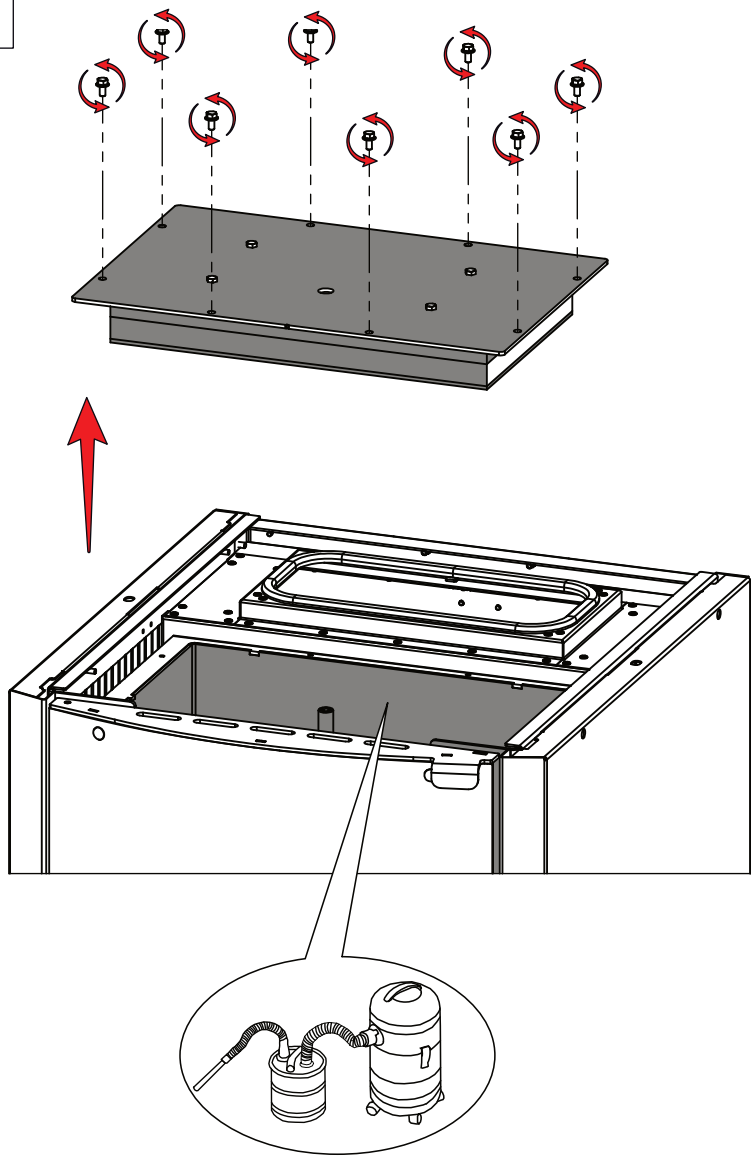
Step 2



Unplug the display and remove the top covers following these steps.

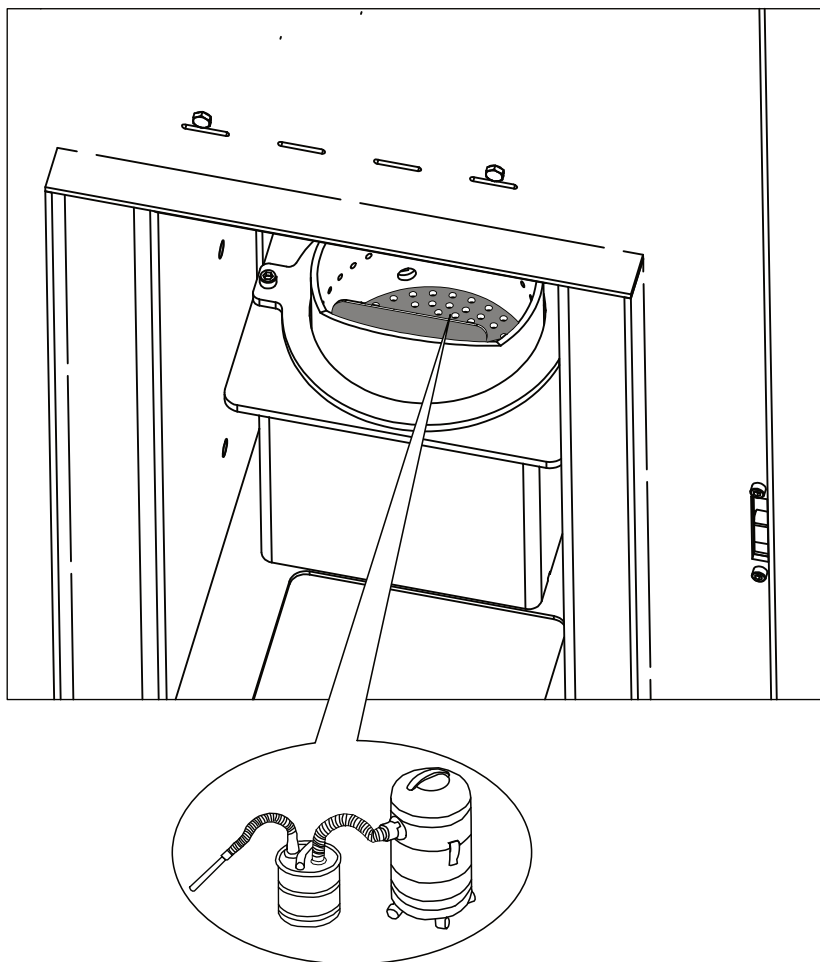


Step 3



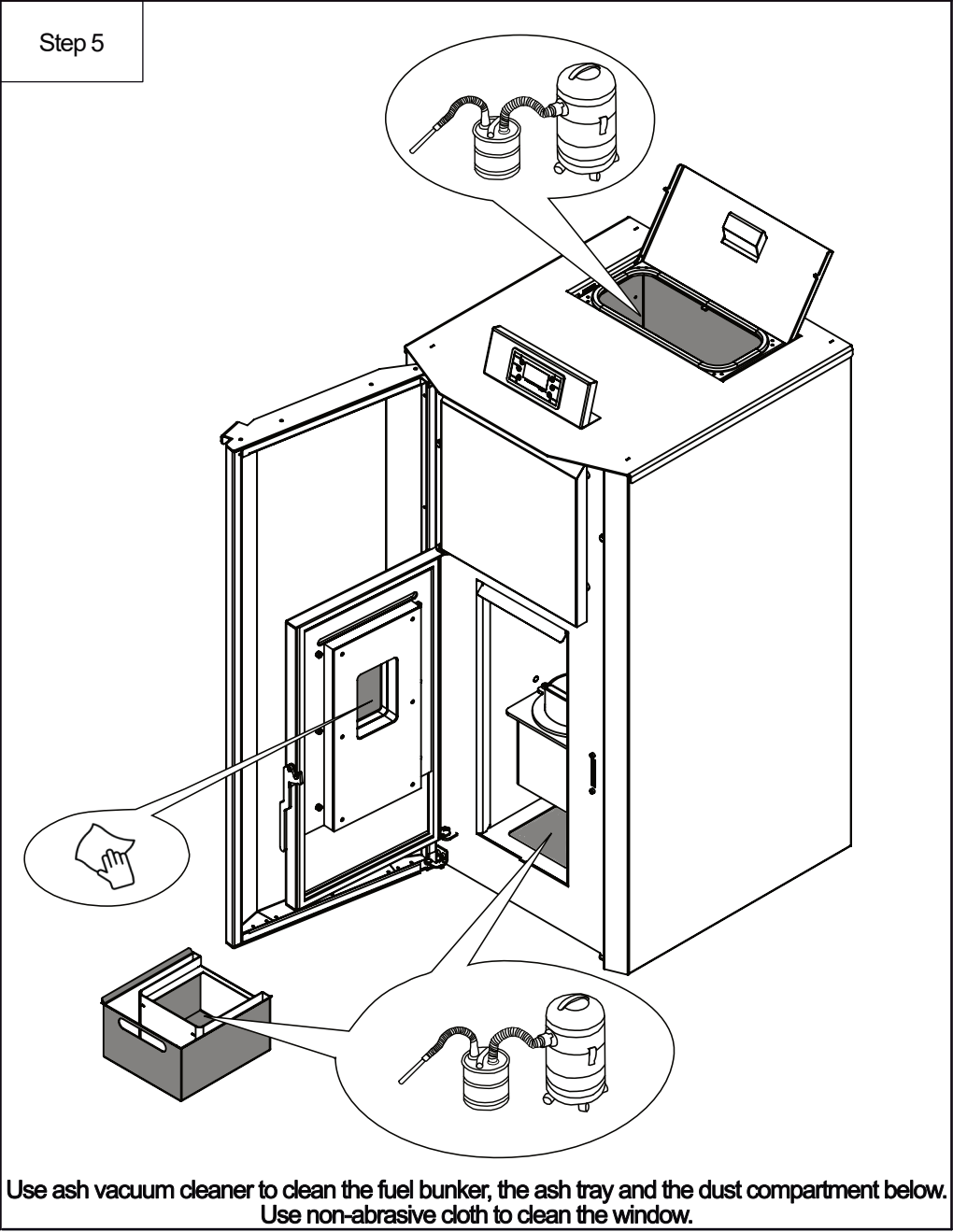
Unscrew by hand the 8 bolts holding the turbolators cover and remove it. Use ash vacuum cleaner to clean any dust left inside.

Step 4



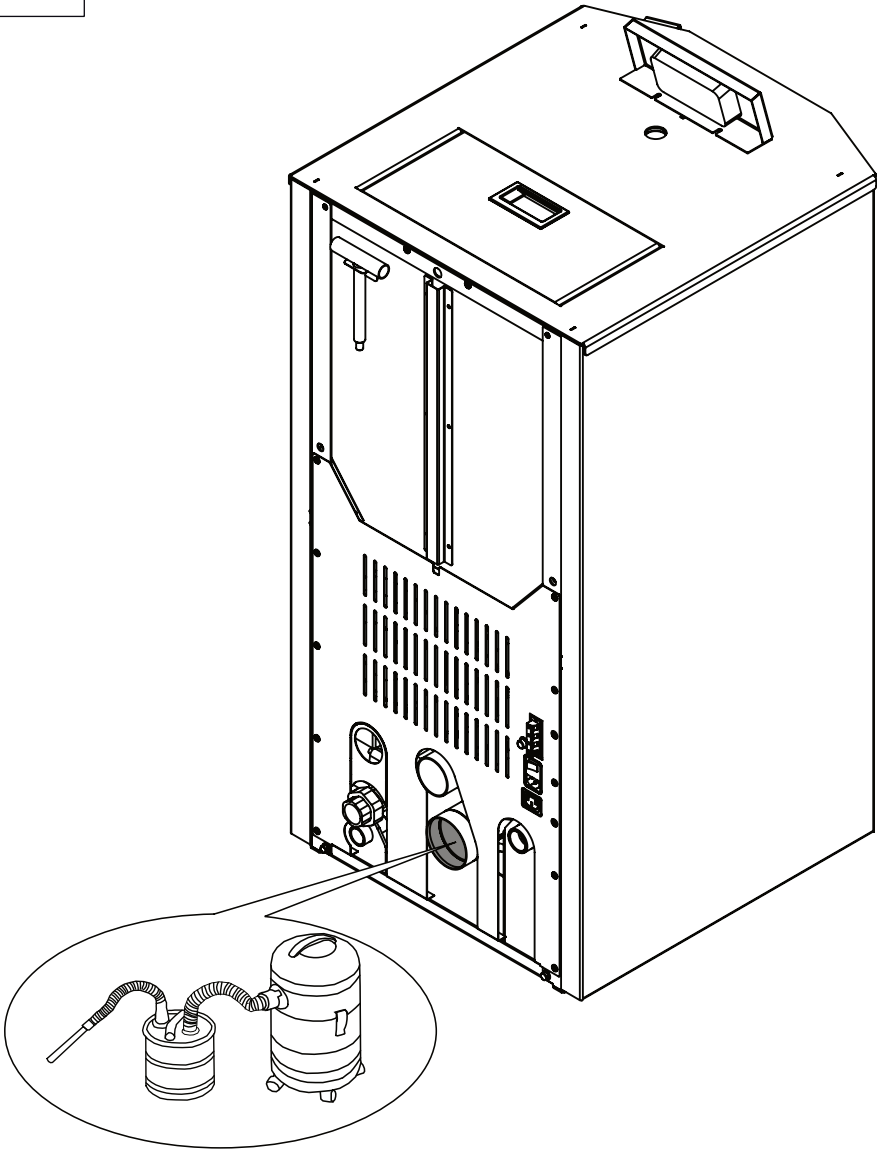
Use ash vacuum cleaner to clean the combustion chamber.

Step 5



Use ash vacuum cleaner to clean the fuel bunker, the ash tray and the dust compartment below.  
Use non-abrasive cloth to clean the window.

Step 6



Use ash vacuum cleaner to clean the flue gas outlet.

Step	Every day	Weekly	Twice per year
1		X	
2+3			X
4	X		
5		X	
6			X

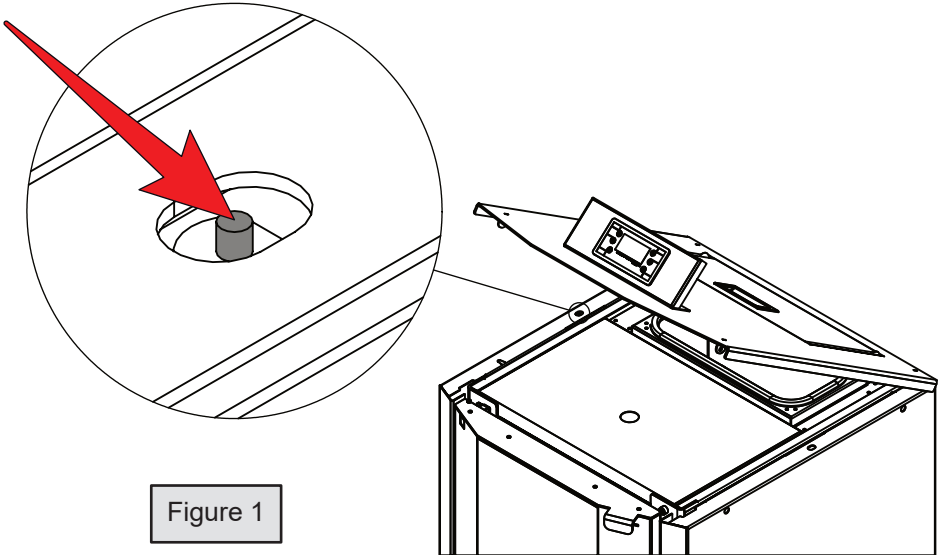
Cleaning intervals are recommended by the manufacturer and may vary according to the type of pellets and legal regulations in the respective country.



Always check all the seals integrity when performing some of the steps. If some seal is compromised it should be replaced as soon as possible.

8. Error codes and messages

Error code/message	Possible cause
	Solution



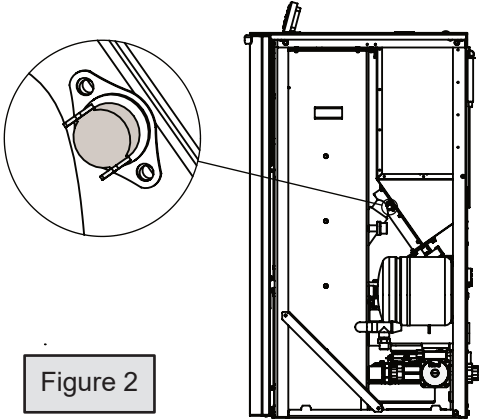


Figure 2

<b>Er01</b>  High voltage error 1	The temperature of the water is above the maximum for safety.
	The stove will automatically turn off. Wait for it and chek the water pump for malfunction. Check water safety protection and reboot it by pressing it. This error will not dissapear or let you start the product before that. Check Figure 1 for location.
<b>Er02</b>  High voltage error 2	High temperature in the pellet hopper caused by poorly cleaned fire pot, sensor malfunction or backfire to the fuel bunker by any reason. Check Figure 2 for sensor location.
	Fallow the cleaning procedure described in this manual and check for stuck fuel. If the error continues contact your technician.
<b>Er03</b>  Low flue gases temperature	Poor quality pellets, lack of pellets in the hopper, wet pellets.
	Check the quantity and quality of the pellets. Check the fuel pot for clogging and the fuel bunker for dust.
<b>Er04</b>  High water temperature in the water jacket	Pressure drop in the installation. Circulation pump malfunction. Badly vented installation.
	Check the system for leaks. Check the circulation pump. Check if there is something blocking the air inlet at the room.

<b>Er05</b>  High flue gas temperature	Uncleaned stove. Sensor malfunction.
	Follow the cleaning procedure described in this manual. If this does not help contact your technician.
<b>Er07</b>  Encoder error	Encoder does not receive signal or fan failure. Broken encoder.
	Check the fan cable for damage. Try to disconnect and connect the fan cable.
<b>Er08</b>  Encoder fan error. Fan speed control failed.	The fan can not reach the set speed. Defective fan. Problem with the electronics. Low voltage of the power grid.
	Check the fan cable for damage. Try to disconnect and connect to power grid.
<b>Er09</b>  Low system pressure	The pressure in the system is lower than the minimum for normal exploitation.
	Check the water level in the system. Check for leaks.
<b>Er10</b>  High system pressure	The pressure in the system is higher than the maximum for normal exploitation.
	Check the system.
<b>Er11</b>  Electronics get wrong data.	Due to a power failure the clock and date are not correct. Failure in the electronics.
	Set the time and date correctly.

<b>Er12</b>  Ignition failed	Igniter malfunction. Lack of pellets. Uncleaned fuel pot. Need of adjustment.
	Visual inspection of the burning pot during start. Check the pellets quantity and if there is something blocking their way going down. Follow the cleaning procedure described in this manual for the fuel pot.
<b>Er15</b>  No power  supply	Power failure during operation.
	Clear the error and check if the pot is clean to continue the work process.
<b>Er16</b>  Error RS485  Communication  connection	Faulty connection of the control board with the display or damaged cable between them.
	Check the plug and the cables between the control board and the display.
<b>Er23</b>  Water  temperature  sensor	Some of the temperature sensors of the stove or buffer is malfunctioning.
	Check the sensors are in order. Check their connection to the board.
<b>Er41</b>  Minimum airflow	Open door. Uncleaned stove. Blocked or missing draft in the chimney.
	Check the door and the seal on it. Follow the cleaning procedures described in this manual.
<b>Er42</b>  Maximum  airflow reached	High pressure in the chimney.
	Check the airflow sensor and the fresh air pipe. Please avoid to connect the fresh air pipe to exterior without a proper cap in the end.



9. Spare parts

Figure 1

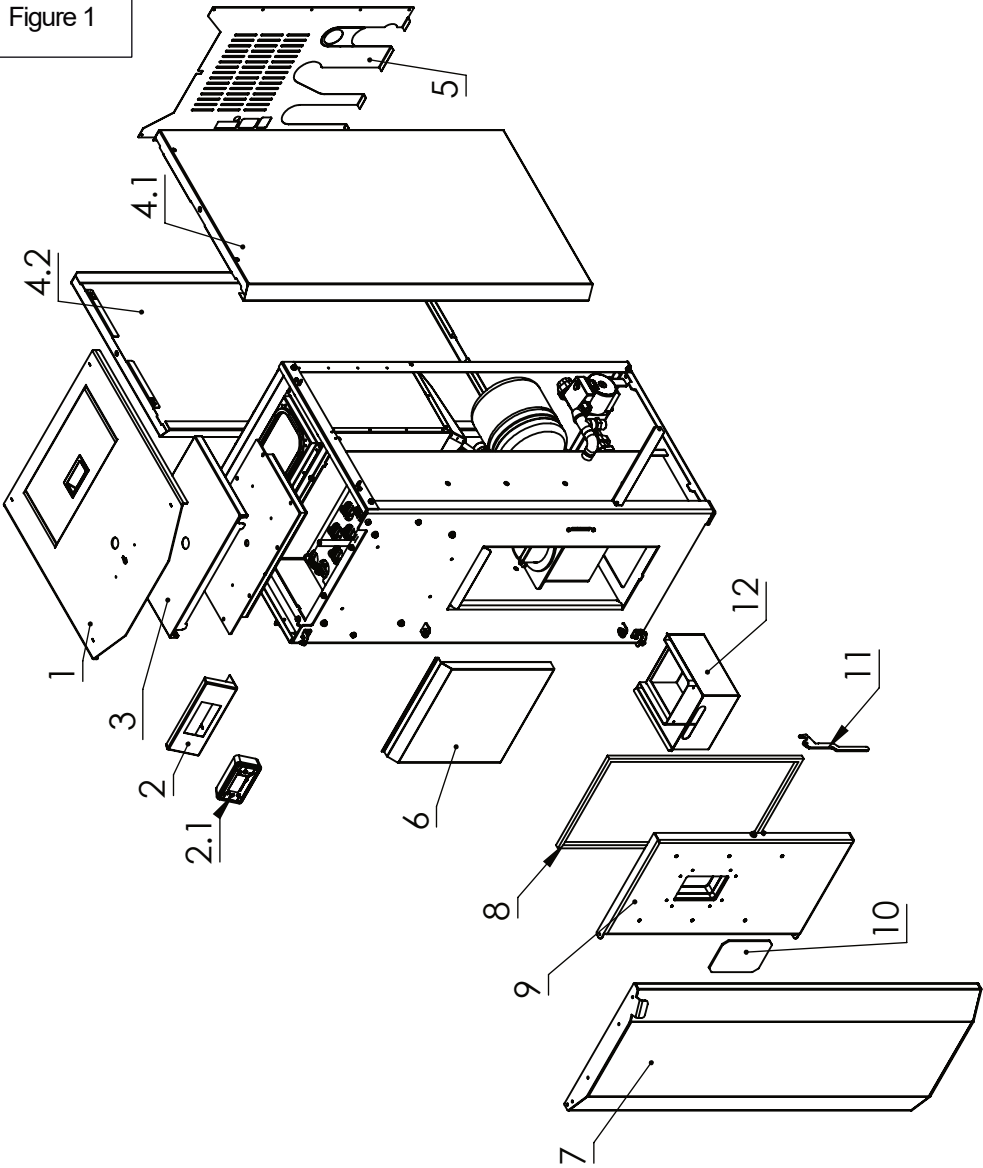


Figure 2

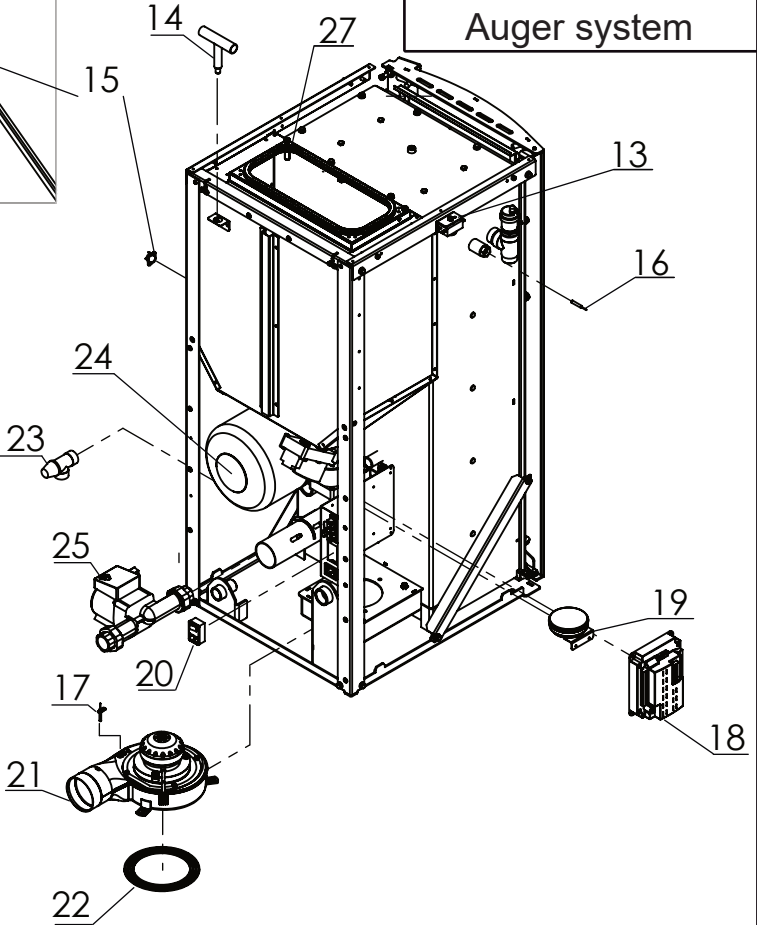
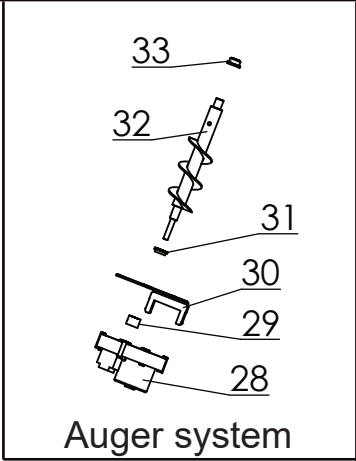
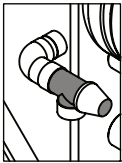
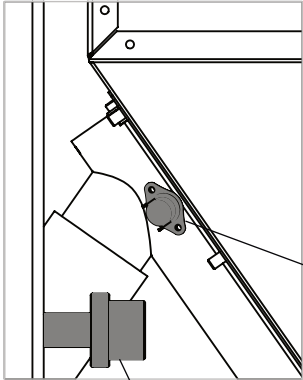


Figure 3

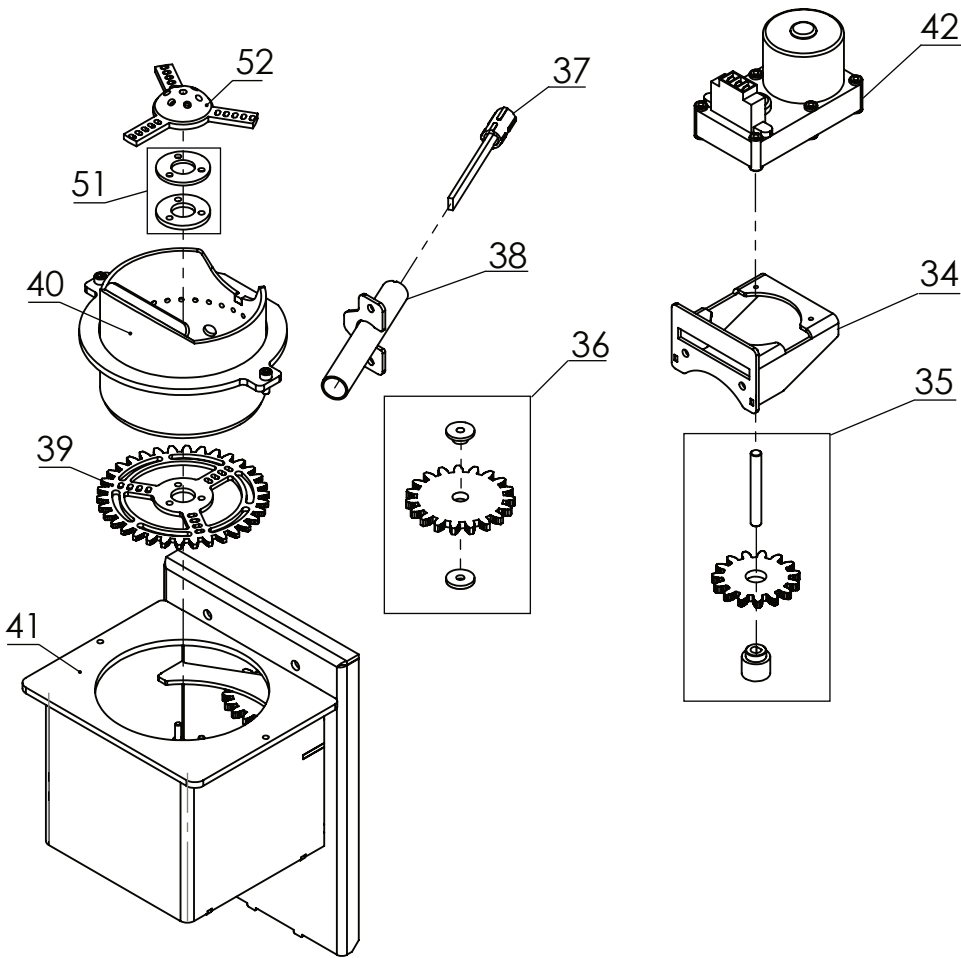
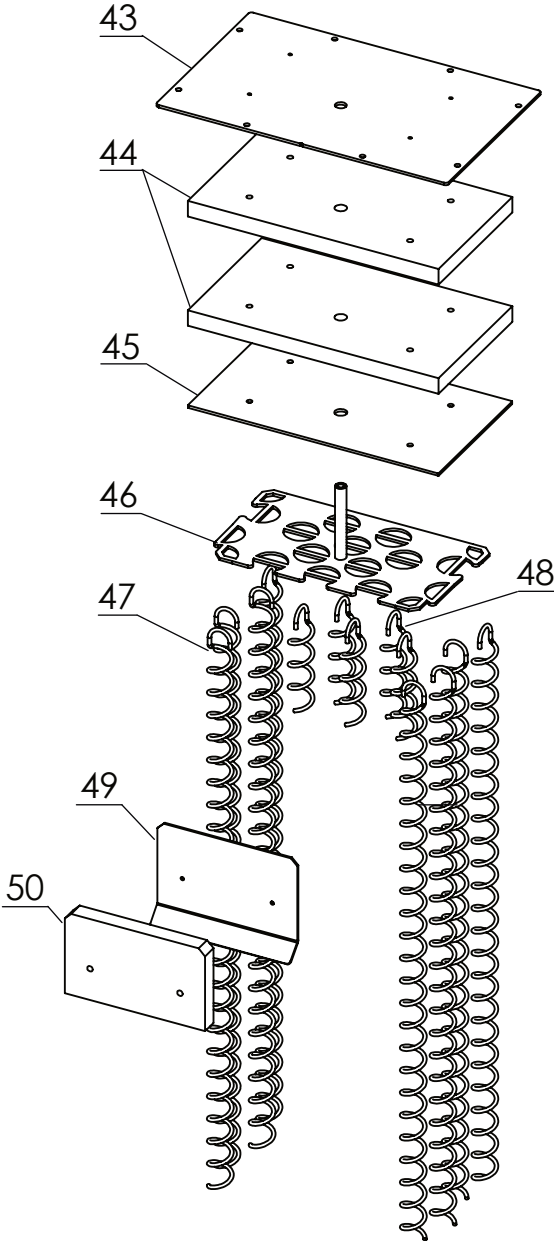


Figure 4



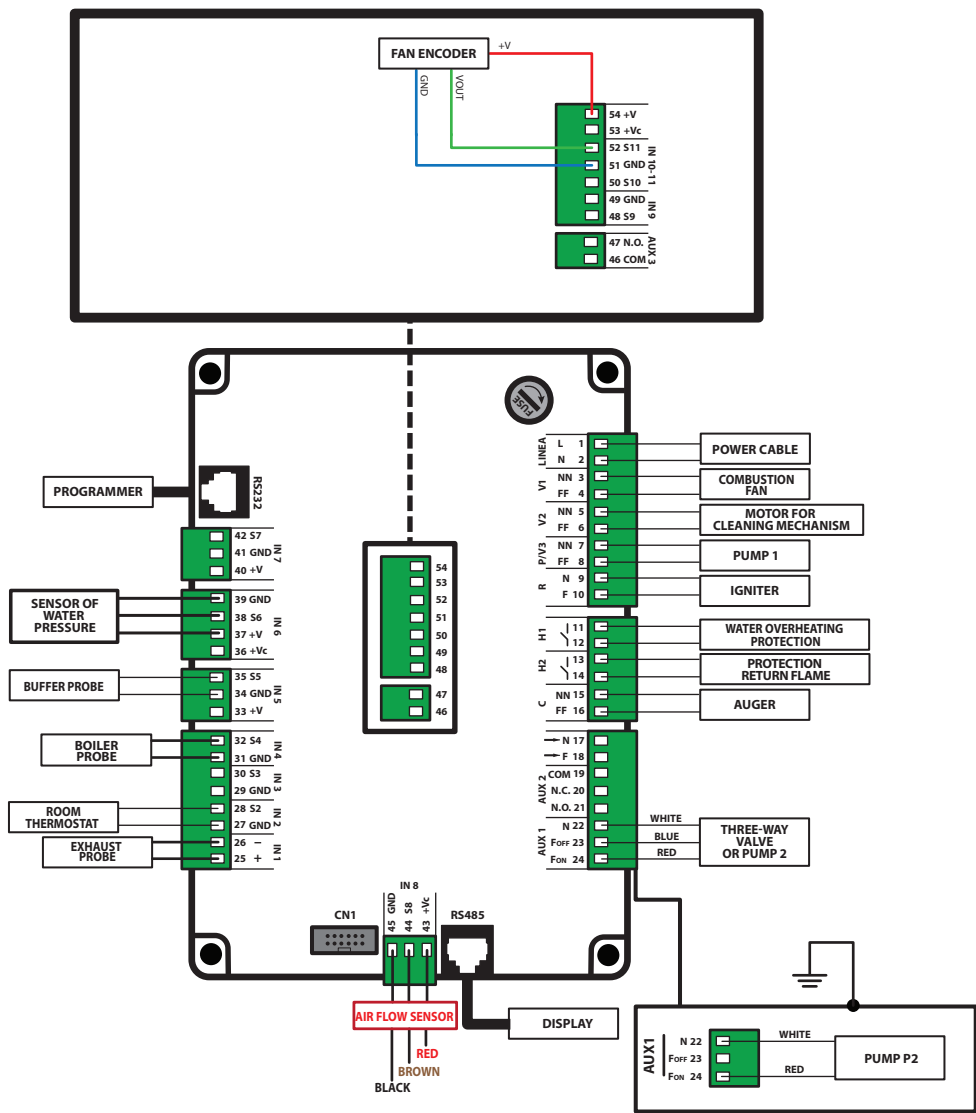
Pos.	Name
1	Bunker door
2	Display stand
2.1	Display
3	Top insulation cover
4.1	Right side decorative panel
4.2	Left side decorative panel
5	Rear decorative panel
6	Front insulation panel
7	Front metal door
8	Front inner door seal
9	Front inner door
10	Glass
11	Door handle
12	Ash container
13	Water overheating safety
14	Handle for manual cleaning of the turbolators
15	Return flame sensor
16	Water temperature sensor
17	Exhaust temperature sensor
18	Control board
19	Air regulator sensor
20	Power supply inlet 3P Alternating current with AC-01 power socket
21	Exhaust fan
22	Exhaust fan gasket
23	Safety valve
24	Expansion vessel
25	Water pump
26	Water pressure sensor
27	Bunker door seal
28	Motor reducer auger
29	Connector between auger spiral and motor

Pos.	Name
30	Holding plate for motor reducer auger
31	Bottom plastic sleeve for auger spiral
32	Auger spiral with axle
33	Upper plastic sleeve for auger spiral
34	Holding plate for cleaning mechanism motor reducer
35	Gear for cleaning mechanism motor reducer with axle and sleeve
36	Transition gear between motor reducer and the cleaning mechanism in the combustion chamber with sleeves
37	Quartz igniter
38	Quartz igniter holding pipe
39	Cleaning mechanism main wheel
40	Combustion pot
41	Combustion box
42	Motor reducer cleaning mechanism
43	Top holding plate for turbolators manual cleaning system
44	Vermiculite insulation plate for turbolators cleaning system (1 piece)
45	Bottom holding plate for turbolators manual cleaning system
46	Holding plate for all turbolators
47	Long turbolator (1 piece)
48	Short turbolator (1 piece)
49	Holder for the vermiculite in the combustion chamber
50	Vermiculite in the combustion chamber
51	Cleaning mechanism spacers (2 pieces)
52	Cleaning mechanism agitator



**Using original spare parts provided only by “Mareli Systems“ or authorized dealer is obligatory! Self repair or using non-original parts may lead to malfunction or injury.**

10. Control board wiring diagram



## **11. Storage and disposal**

### **11.1 Disposal of package**

The packaging of the device consists of cardboard and plastic foil. They should be separated and disposed of according to local regulations. Keep them away from children.

### **11.2 Not used for idle periods**

If the stove is not used for a long periods (and/or at the end of each season), proceed as follows:

- Remove the pellets from the hopper.
- Disconnect the power supply.
- Clean following the procedures in this manual and check for damaged parts. Get them replaced by a qualified personnel.
- Protect the stove from dust with suitable covering.
- Store in dry and sage place protected from atmospheric agents.

### **11.3 Disposal of the appliance**

Follow the operations below for stove decommissioning:

- Disconnect the stove from the power supply and unplug it from the socket.
- Empty all pellets from the hopper.
- Seal the boiler inside strong packing.
- Dispose of the stove as required by the regulations in force in the country of installation.

Recycle and disposal of the appliance are the sole responsibility of the owner, who must act in compliance with the applicable laws in the country, regarding safety, respect and protection of the environment. At the end of its useful life the product must not be disposed of together with municipal waste. It can be taken to the appropriate recycling centres set up by the municipalities, or to retailers that provide this service. Disposing of the product separately avoids possible negative consequences for the environment.

In particular, the electrical and electronic components must be separated and disposed of at centres authorized for this activity.





This symbol means the product must not be disposed together with domestic waste. For the purpose of preventing damage to health or the environment, users are kindly asked to separate this equipment and/or batteries or accumulators included from other types of waste and to arrange for disposal by a suitable service, organization or dealer. For more information about how to collect electric and electronic equipment and the appliances, batteries and accumulators, please contact your local council or public authority competent to issue the relevant permit.

This image shows a single sheet of white paper with horizontal blue or grey ruling lines. The lines are evenly spaced and run across the width of the page. There are no margins, text, or other markings on the paper.





# Mareli Systems

STEP FORWARD

Mareli Systems  
Industrial Zone  
Simitli, 2730  
Region Blagoevgrad  
Bulgaria

[info@mareli-systems.com](mailto:info@mareli-systems.com)  
[www.mareli-systems.com](http://www.mareli-systems.com)

MARELI SYSTEMS disclaims any responsibility for possible inaccuracies contained in this manual if they are due to printing or transcription errors. We reserve the right to make any change that appears to be necessary or useful without harm the essential characteristics.